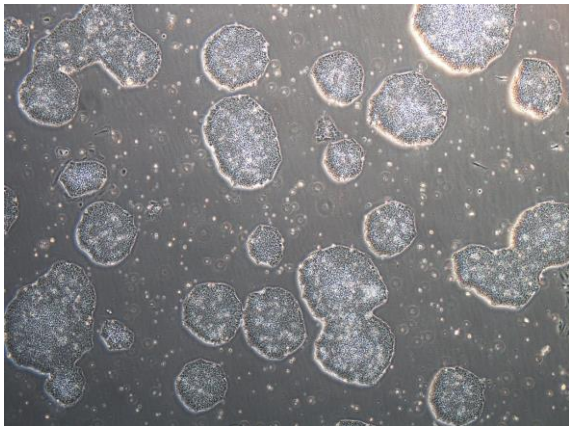
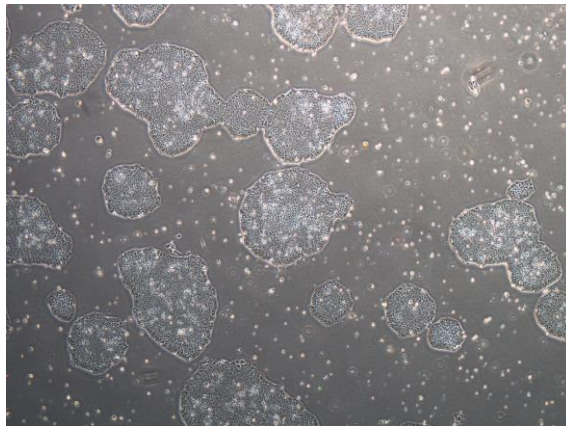


【 CiRA-j-1020 】 Morphology of iPSC colonies

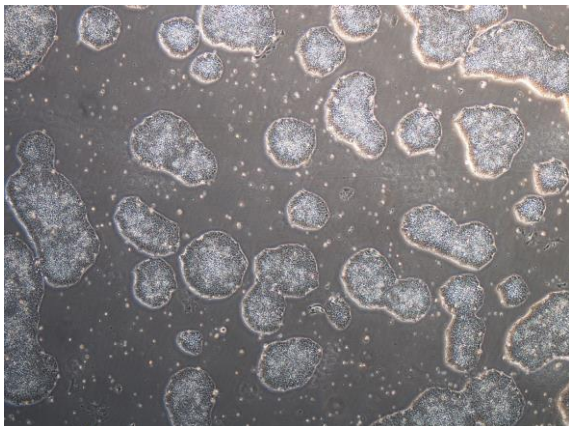
CiRA-j-1020-A: passage-2



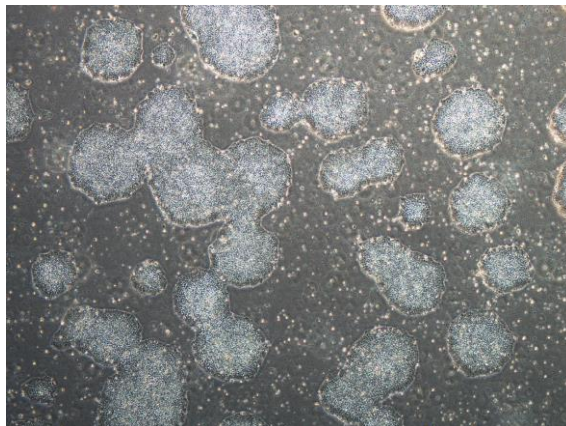
CiRA-j-1020-B: passage-2



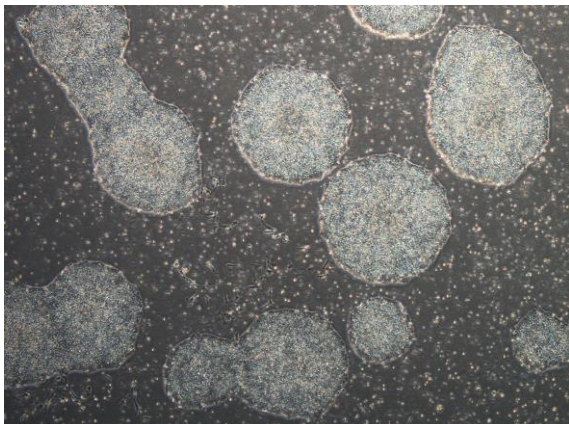
CiRA-j-1020-C: passage-2



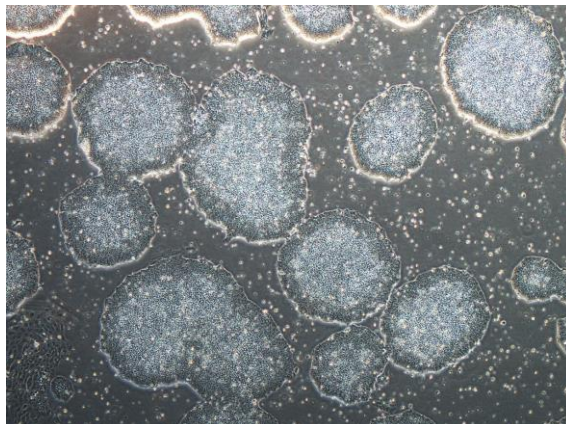
CiRA-j-1020-D: passage-2



CiRA-j-1020-E: passage-2



CiRA-j-1020-F: passage-2



(All images were captured at 4x magnification)